

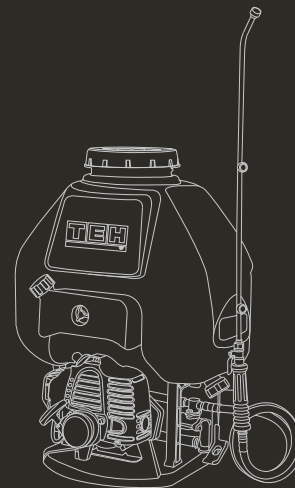


www.tehtools.com

Knapsack Power Sprayer

TSP90925

To Be Your Exclusive Helper



TEH



TECHNICAL SPECIFICATION

Model	TSP90925
Pump	Horizontal gear driving
Plunger	1 piece (two-way operation)
Cylinder	2 pieces
Dia of plunger	18mm
Stroke	8mm
Spray capacity	8L
Pressure	15-25kg/cm ²
Tank capacity	25L
Type	Two strock air cooling piston type engine
Horsepower	1.0HP
Air Consumption	25.6CC
Volume of oil barrel	0.9L
Fuel	Lubricating oil , Blended gasoline
Mixing ratio of fuel	25:1
Carburetor	Chaff piston type
Lighting direction	Electronic lighting

Lighter	NGK BM6A
Mode of start	Type of drawing
Mode of stop	Type of once line shots out
Mode of lubrication	Type of mixing and lubricating fuel
Mode of air cleaner	Type of drying

COMPONENTS AND ACCESSORIES



Accessories included :

- 1 instruction manual
- 1 spray gun
- 1 belt
- 1 outlet hose
- 1 spanner
- 1 oil tank
- 1 V-packing
- 1 gasket

THE PRECAUTION DURING PUMP APPLICATION

A. REGARD TO THE VALVE:

1. Disassemble the valve plug from the valve and clean it if they are stuck up.
2. Clean the residues accumulated over the valve plug
3. Change the valve spring if it is broken or worn out.

B. REGARD TO AN UNLOADED VALVE:

1. Change a new one if the pressure gate or the valve seat is found worn out.
2. Clean the residues on the valve seat.
3. Change new ones if the oil ring is worn out.

C. REGARD TO THE CRANK CASE:

1. If the oil inside the crankcase is insufficient, the connecting rod, the crank and the bearings will be worn out, then remove the back cover from the crank case and change the components.
2. If the oil inside the crankcase is deteriorated. Make sure the reason why it is deteriorated and then change the oil or the piston oil seal.
3. If the plunger can not operate , make sure that the bearing is broken in crank case and change the bearing.

D. REGARD TO THE PISTON:






1. Change a new one if the V-packing is worn out.
2. Change a new piston if it is worn out (a crack occurred along the axis of the piston is the one of the consequences causing a pressure decreasing or a water leakage).

E. OTHER:

1. Change a new nozzle if it is broken causing 8 pressure decreasing.
2. Change a new high pressure pipe or a new connecting packing if they are found broken,

IMPORTANT NOTE

SYMBOLS

-  Read the manual
-  Warning
-  Wearing a mask
-  Wearing gloves
-  WEEE marking

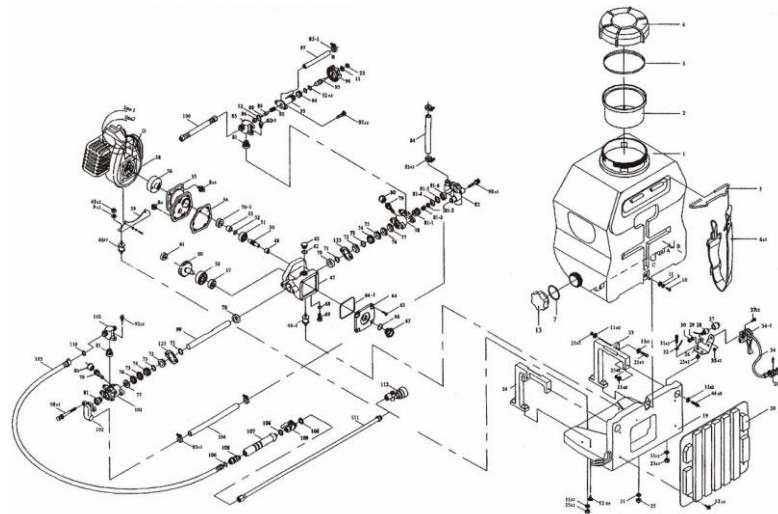
OPERATION PROCEDURE

1. Check the power source.
2. Fasten a high pressure outlet pipe.
3. Turn on the power of motor and switch on a sprayer immediately to release the residual air from inside the pump, make sure that the water fluid from an outlet is normal (if it is abnormal, then remove the high pressure outlet pipe so as to accelerate the air releasing from the pump).
4. Adjust the pressure by turning a pressure releasing valve clockwise to obtain a normal pressure.

THE LUBRICATION OF THE PUMP

1. Originally change the oil after the machine mining about 30 50 hours and subsequently, in an interval of about 70- 100 hours (made sure whether or not the oil is deteriorated).
2. Unfasten an outlet screw and release the discarded oil.
3. Fasten the outlet screw and unfasten an inlet cover then replenish 30#-40# clean oil. The right amount of the oil indicates at a two third portion in an oil glass.
4. Always fill the grease cups with grease. Screw on the grease cups 2-3 cycles every 2 hours of spraying.
5. Be sure to clear the interior of pump by pouring clear water into the tank and restarting the motor immediately after finishing the application of chemical.

PRODUCT EXPLODED VIEW



EXPLODED VIEW PART LIST

No.	Description	No.	Description
1	Chemical con tainer	24	Left stand
2	Filter	25	Nylon nut
3	Gasket	26	Fixed plate
4	Container cover	31	Screw
5	Chain holder	32	Cord comp
6	Strap	33	Washer
7	Gasket	34	Cable comp
8	Screw	34-1	Flex accelerator
9	Spring washer	35	Nylon nut
10	Screw	37	Screw
11	Washer	38	Engine
12	Screw	39	Engine stand
13	Drain cup	40	Washer
19	Frame	41	Spring washer
20	Pad	42	Screw
21	Screw	43	Nut
23	Right stand	46	Joint-s

No.	Description	No.	Description
46-1	Joint-L	65	Screw
47	Crank case	66	O-ring
48	Bearing	67	Oil glass
50	Shaft	68	O-ring
51	Bearing	69	Drain plug
52	O-ring	70	Oil seal
53	Steel pipe	70-1	Oil seal
54	Gasket	71	O-ring
55	Drum case	72	Adjusting ring
56	Drum clutch	73	Grease ring
57	Bearing	74	V-packing upper seal
58	Bearing	75	V-packing
59	Gear shaft	76	V-packing(fabric)
60	Gear	77	Packing seat
61	Bearing	78	Cylinder
62	O-ring	79+80	Grease cup
63	Oil inlet cup	81	Valve Ass'y
64	Crand case cover	82	Suction ch am ber
64-1	O-ring	83	Clip-L

No.	Description	No.	Description
83-1	Clip-s	100	High pressure hose
84	Suction hose	101	Cylinder
85	Outlet chamber	102	Suction chamber
86	Valve seat	103	Outlet chamber
88	Pressure valve	104	Suction hose
89	Pressure valve rod	105	High pressure hose
90	Spring	106	Packing
91	Screw	107	Hose pipe handle
93	Relief valve Ass'y	108	Roller
94	Nut	119	Ball cock
95	Pressure valve screw	110	Packing
96	Pressure adjusting	111	Spray rod
97	Overflow hose	115	Nozzle (4 hole)
98	Screw	123	Fixed plane
99	Plunger		

WARRANTY CARD

Dear customers, the warranty service for purchasing TEH products is as follows:

Under normal use, the wear of the rotor steering gear is less than 0.2 mm within three months from the date of purchase. It is guaranteed that the damage is caused by the quality of the tool.

The following conditions occur during the warranty period, not covered by the warranty:

- Any valid legal document (single ticket) certifying the date of purchase
- Any damage caused by natural wear and overload
- Any damage caused by the use of low-priced inferior accessories
- Any damage caused by improper carrying, transportation or storage
- Any product that has been opened, repaired, replaced, or modified by itself
- Any damage caused by misuse, beyond the scope of use of the tool, and failure to use and maintain in accordance with the instructions.

 ladies/gentlemen: _____ employer: _____

contact number: _____ fax number: _____

contact address: _____

warranty record: _____

post code: _____

IMPORTANT NOTE

- The invoice and warranty card must be presented at the time of warranty.
- The fuselage number on the invoice is the same as the fuselage number on the warranty card.
- Once this warranty card is issued, if it is lost, it will not be reissued. Please keep it properly.

Note: The company reserves the right to amend the above provisions and has the final interpretation right in the case that the warranty service does not violate national laws.