

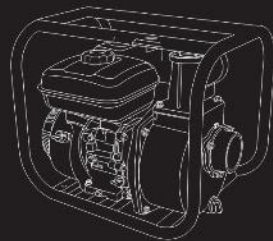


[www.tehtools.com](http://www.tehtools.com)

Gasoline Water Pump

**TGP16820 TGP16830**

To Be Your Exclusive Helper



**TEH**

## TECHNICAL SPECIFICATION

Model	TGP16820	TGP16830
Engine Type	168F	168F-1
Output Power	5.5HP	6.5HP
No-load Speed	3600r.p.m	3600r.p.m
Connection Dia	50mm	80mm
Pump Output	30m <sup>3</sup> /h	58m <sup>3</sup> /h
Suction Head	8m	8m
Pump Lift	26mm	28mm
Fuel Tank Capacity	3.6L	3.6L

## COMPONENTS AND ACCESSORIES



Accessories included:  
1 instruction manual  
1 standard accessories

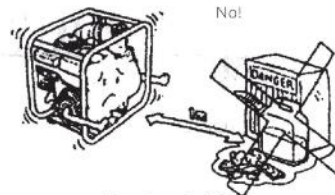
## SAFETY

BE CAREFUL!



No use in house!

KEEP IN FLAMMABLE MATERIAL AWAY



More than 1m(3ft)

WHEN REFUELING:



Stop engine!



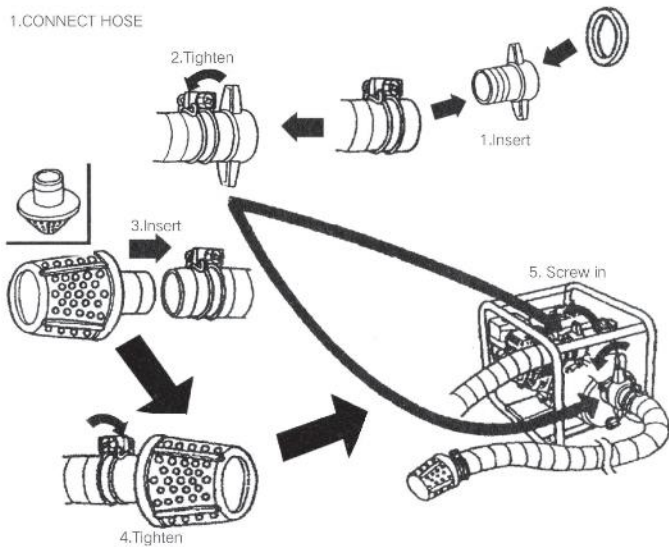
No smoking!



Do not spill!

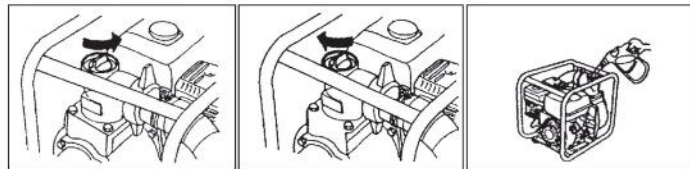
## BEFORE STARTING

1.CONNECT HOSE

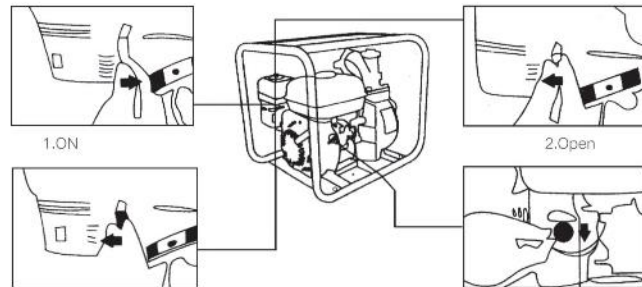


3

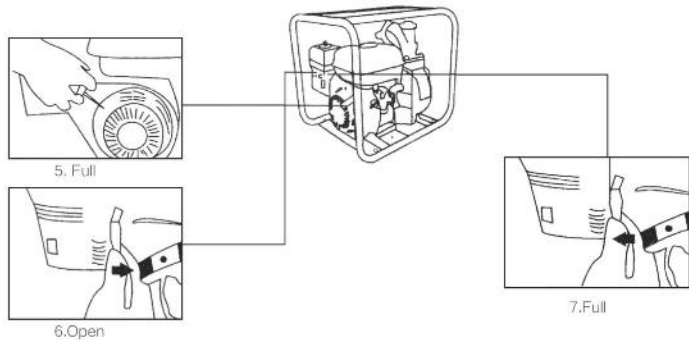
2. FILL PRIMING WATER



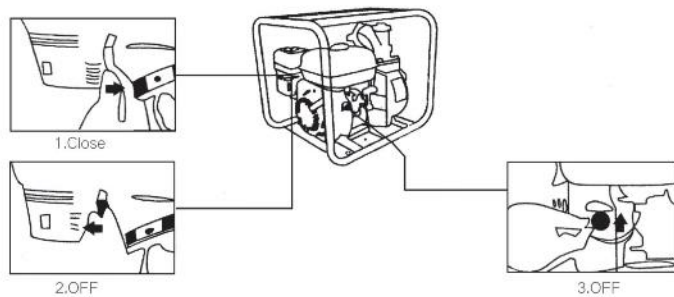
## START ENGINE



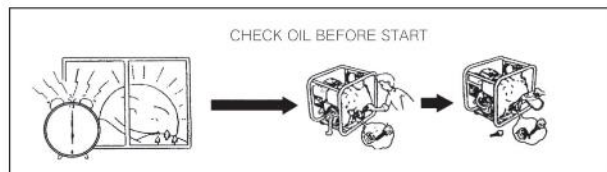
4

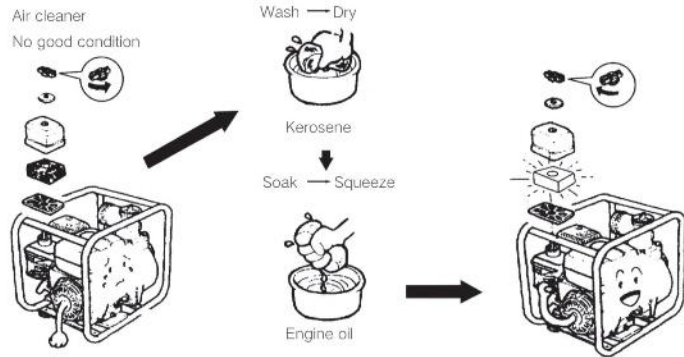
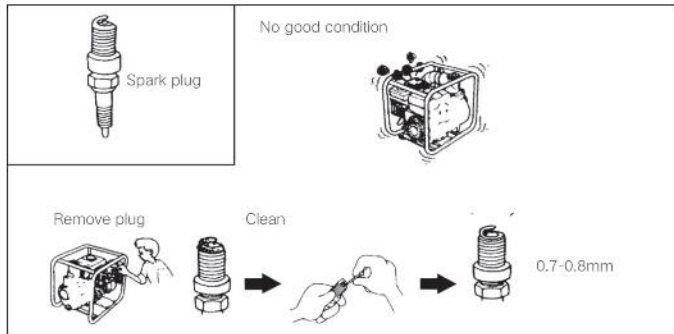


## STOP ENGINE



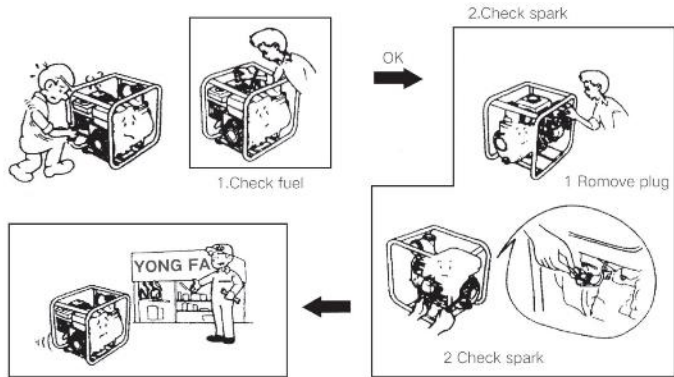
## MAINTENANCE



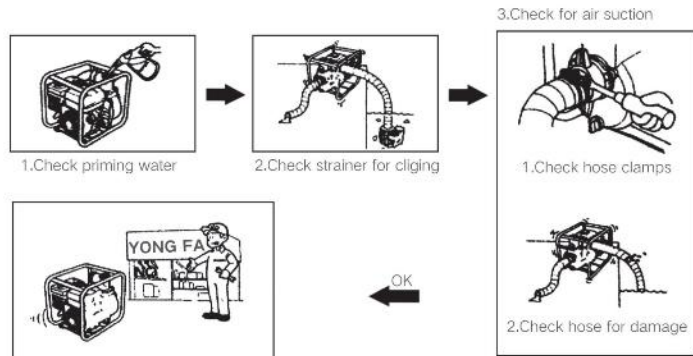


## TROUBLE SHOOTING

ENGINE NOT START



NOT PUMP UP



## WARRANTY CARD

Dear customers, the warranty service for purchasing TEH products is as follows:

**Under normal use, within six months from the date of purchase. It is guaranteed that the damage is caused by the quality of the tool.**

The following conditions occur during the warranty period, not covered by the warranty:

- Any valid legal document (single ticket) certifying the date of purchase
- Any damage caused by natural wear and overload
- Any damage caused by the use of low-priced inferior accessories
- Any damage caused by improper carrying, transportation or storage
- Any product that has been opened, repaired, replaced, or modified by itself
- Any damage caused by misuse, beyond the scope of use of the tool, and failure to use and maintain in accordance with the instructions.

ladies/gentlemen: \_\_\_\_\_ employer: \_\_\_\_\_

contact number: \_\_\_\_\_ fax number: \_\_\_\_\_

contact address: \_\_\_\_\_

warranty record: \_\_\_\_\_

post code: \_\_\_\_\_

### IMPORTANT NOTE

- The invoice and warranty card must be presented at the time of warranty.
- The fuselage number on the invoice is the same as the fuselage number on the warranty card.
- Once this warranty card is issued, if it is lost, it will not be reissued. Please keep it properly.

Note: The company reserves the right to amend the above provisions and has the final interpretation right in the case that the warranty service does not violate national laws.