

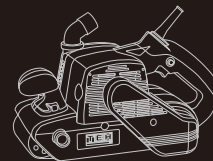


www.tehtools.com

Belt Sander

TBS3710 TBS3712

To Be Your Exclusive Helper



TEH



TECHNICAL SPECIFICATION

Model	TBS3710	TBS3712
Rated voltage	220V 50Hz	220V 50Hz
Rated input power	1010W	1200W
Abrasive belt speed	120-380m/min	500m/min
Abrasive belt size	76x533mm	100x610mm

COMPONENTS AND ACCESSORIES



Accessories included:

- 1 instruction manual
- 1 sanding belt
- 1 dust bag
- 1 dust port adapter(TBS3710)
- 2 spare carbon brushes

SAFETY INSTRUCTIONS

WARNING ⚠

Read all instructions. Failure to follow all instructions listed below may result in electric shock, fire and/or other serious injury. The term “power tools” in all of the warnings listed below refers to mains-operated (corded) power tool or battery operated (cordless) power tool.

WORK AREA

- a) Keep work area clean and well lit. Cluttered and dark areas invite accidents.
- b) Do not operate power tools in explosive atmospheres, such as in the presence of flammable liquids, gases or dust. Power tools create sparks which may ignite the dust or fumes.
- c) Keep children and bystanders away while operating a power tool. Distractions can cause you to lose control.

ELECTRICAL SAFETY

- a) Power tool plugs must match the outlet. Never modify the plug in any way. Do not use any adapter plugs with earthed (grounded) power tools. Unmodified plugs and matching outlets will reduce risk of electric shock.
- b) Avoid body contact with earthed or grounded surfaces such as pipes, radiators, ranges and refrigerators. There is an increased risk of electric shock if your body is earthed or grounded.
- c) Do not expose power tools to rain or wet conditions. Water entering a power tool will increase the risk of electric shock.
- d) Do not abuse the cord. Never use the cord for carrying, pulling or unplugging the power tools. Keep cord away from heat, oil, sharp edges or moving parts. Damaged or entangled cords increases the risk of electric shock.

e) When operating a power tool outdoors, use an extension cord suitable for outdoor use. Use of a cord suitable for outdoor use reduces the risk of electric shock.

PERSONAL SAFETY

a) Stay alert, watch what you are doing and use common sense when operating a power tool. Do not use a power tool while you are tired or under the influence of drugs, alcohol or medication. A moment of inattention while operating power tools may result in serious personal injury.

b) Use safety equipment. Always wear eye protection. Safety equipment such as dust mask, non-skid safety shoes, hard hat, or hearing protection used for appropriate conditions will reduce the risk of personal injuries.

c) Avoid accidental starting. Ensure the switch is in the off-position before plugging in. Carrying power tools with your finger on the switch or plugging in the power tools that have the switch on invites accidents.

d) Remove any adjusting key or wrench before turning the power tool on. A wrench or a key to a rotating part of the power tool may result in personal injury.

e) Do not overreach. Keep proper footing and balance at all times. This enables better control of the power tool in unexpected situations.

f) Dress properly. Do not wear loose clothing or jewellery. Keep your hair, clothing and gloves away from moving parts. Loose clothes, jewellery or long hair can be caught in moving parts.

g) If devices are provided for the connection of dust extraction and collection facilities, ensure these are connected and properly used. Use of these devices can reduce dust related hazards.

POWER TOOL USE AND CARE

a) Do not force the power tool. Use the correct power tool for your application. The correct power tool will do the job better and safer at the rate for which it was designed.

b) Do not use the power tool if the switch does not turn it on and off. Any power tool that cannot be controlled with the switch is dangerous and must be repaired.

c) Disconnect the plug from the power source before making any adjustments, changing accessories, or storing power tools. Such preventive safety measures reduce the risk of starting the power tool accidentally. d) Store idle power tools out of the reach of children and do not allow persons unfamiliar with power tool or these instructions to operate the power tool. Power tools are dangerous in the hands of untrained users.

e) Maintain power tools. Check for misalignment or binding of moving parts, breakage of parts, breakage or parts and any other condition that may affect the power tools operations. If damaged, have the power tool repaired before use. Many accidents are caused by poorly maintained power tools.

f) Keep cutting tools sharp and clean. Properly maintained cutting tools with sharp cutting edges are less likely to bind and are easier to control.

g) Use the power tool, accessories and tool bits etc., in accordance with these instructions and in the manner intended for the particular type of power tool, taking into account the working conditions and the work to be performed. Use of the power tool for operations different from intended could result in a hazardous situation.

SERVICE

a) Tool service must performed only by qualified personnel. Service or maintenance performed by unqualified personnel could result in risk of injury.

b) When servicing a tool, use only identical replacement parts. This will ensure that the safety of the power tool is maintained.

ADDITIONAL SAFETY RULES FOR BELT SANDER

1. Ensure the power source conforms to the requirements stated on the name plate of the tool.
2. Do not use the tool in wet or damp conditions.
3. Always keep the work area free of tripping hazards.

4. When using the sander always ensure you are wearing protective safety equipment including safety glasses/ goggles, ear muffs, dust mask and other protective clothing including gloves and apron.
5. Always turn the sander off and remove the power plug from the socket before making any adjustments, changing accessories, servicing, maintenance or storing power tools.
6. When installing or replacing sand belt and other accessories, ensure the switch is turned off and that the power plug is disconnected from the mains power supply.
7. Before connecting the power cord to the mains power supply ensure the switch is in the off position.
8. Always check the workpiece before operation and remove any obstructions such as nails, staples, screws, string, rags, cloth sand other debris.
9. Check the position of power cables before commencing work ensuring they are well away from the work area. .
10. Always check walls, floor sand ceilings to avoid hidden power cables, pipes etc.
11. Do not touch the sand belt or workpiece directly after operation. It may be HOT and could burn.
12. When an extension power cord is required ensure that it has the correct ampererating for your sander and that it is in a safe electrical condition.
13. Fully unwind the extension cable if the extension cable is supplied with a cable drum. This will avoid overheating.
14. Take special care o guard against harmful and toxic dusts when sanding lead-based painted surfaces ,woods and metals ,including the following:
15. All persons entering the work area must wear a face mask specially designed for protection against toxic dust and fumes such as those arising from the sanding of lead paint .
16. Children and pregnant women must not enter the work area.
17. Do not eat, drink or smoke in the work area.
18. Extreme care should be taken when sanding painted surfaces. The dust may contain lead which if it comes into contact with the skin oris breathed in will cause poisoning. If you suspect paint contains lead stop immediately and seek professional advice.

19. Do not use worn or damaged sanding belts. This may result in motor overload and sub standard work.
20. Do not use the same sanding belt for wood and metal as metal particles will become embedded in the sand belt and will damage wooden surfaces. This will void any unnecessary damage to the base.
21. Regularly clean out the build-up of dust on the base (under the sand belt) and on the workpiece.
22. Do not allow the sand belt to wear completely down before replacing. This will avoid any unnecessary damage to the base.
23. Always hold the sander firmly with both hands.
24. When using the sander make sure that the workpiece is securely attached to a workbench.
25. The sander must be running before the sanding pad comes into contact with the workpiece.
26. Allow the sander to reach its optimum speed before commencing work.
27. Keep hands and other body parts away from the sanding pad while the sander is in use.
28. Do not put the tool down until the sanding pad has come to a complete stop.
29. This tool is not to be used on wet surfaces.
30. Do not attempt tasks outside the capacity of this tool.






CAUTION 

- 1. For best results and safe use of this tool it is recommended that the workpiece should be clamped securely to a work bench.**
- 2. Use the appropriate sanding belt for the particular task at hand. The lower the grit number, the coarser the sanding belt.**
- 3. If stock is not being removed as quickly as you would like, a sanding belt with a lower grit number may be required. Applying excessive pressure on the tool will not result in faster operation.**

4. Move the sander forwards and backwards over the workpiece at a constant speed ensuring that an even weight is applied.
5. Always sand wooden surfaces strip by strip, parallel to the grain. Do not move the tool in circles.
6. When preparing timber for painting or varnishing, start by using a coarse grit sanding belt to remove the stock. Follow with a fine grit sanding belt to obtain a smooth finish.
7. For a smooth finish and to avoid unwanted scratch marks ,ensure that the final sand is completed with a new piece of sanding sheet.
8. This tool is not suitable for use on plaster.

IMPORTANT NOTE

SYMBOLS

-  Read the manual
-  Warning
-  Wearing protection
-  Double insulation
-  WEEE marking

WARNING

Before using your belt sander be sure to read the instruction manual carefully.

OPERATION INSTRUCTION

CAUTION

Before using your belt sander be sure to read instruction manual carefully. Do not sand plaster surfaces , (WARNING: In this case your guarantee becomes void) this may clog the motor (brushes, ball bearings,...).

Remove the power tool from the packaging. Do not plug it into the electrical grid before assembly.

GRINDING BELT SELECTION

Type K# for work on wood, iron and steel work pieces.

Belt Grain	Use
K40	Rough machining
K80	Medium , rough machining
K150	Fine machining

For rough grinding, please use a belt with a belt grain size of 40# and 60#.

For finer grinding ,use one of the corresponding finer grain sizes.

On uneven surfaces, first use a rough grinding belt for smoothing and then a finer belt for the fine work.

REPLACING THE SAND BELT

Disconnect the sander from the mains.

Pull out the locking lever in the side of the belt sander to loosen the sand belt from the rollers. Select a sanding belt with the appropriate grain size for the task.

Fit the sand belt onto the rollers.

The arrows on the sand belt must follow the direction of rotation.

Lock the sanding belt in place using the locking lever.

Switch on the sander and check that the sand belt runs continuously in the centre of the rollers. If it does not, use the adjusting screw to adjust the position of the sand belt.

INSTALLING THE DUST COLLECTION BAG

Attach the dust collection bag with the help of the wire frame to the opening on the dust discharge outlet of the machine. When the dust bag is too full, it affects the suction power. Therefore, it is advisable to empty the bag as soon as it is 2/3 full. To empty, open the catch on the bottom side of the dust collection bag.

SWITCHING ON/OFF

Connect the plug to the power supply, the power-on indicator is illuminated until the tool disconnects from the power mains.

The ON/OFF switch trigger is located on the handle of the belt grinder.

The switch can be locked in place with the use of the lock-on button on the side of the belt grinder. Press the ON/OFF switch trigger and subsequently the Lock on button. The machine now runs in continuous operation. The lock is disengaged by means of another pressing of the ON/OFF switch trigger.

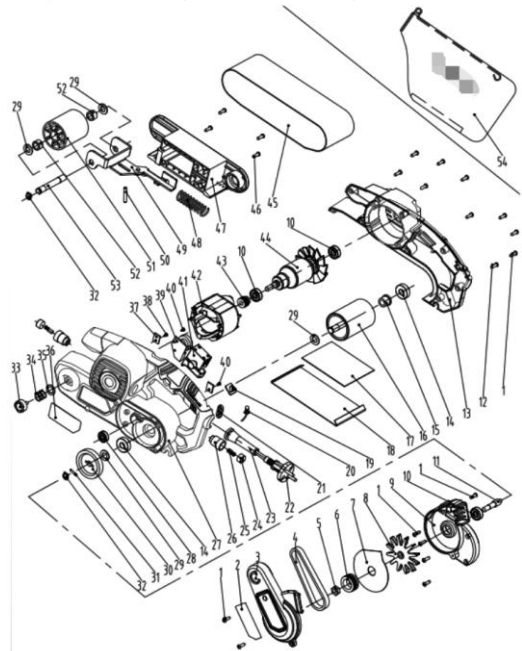
VARIABLE SPEED CONTROL

The operator can adjust variable speed by turning the speed adjustment dial. It is the highest speed in the "6" position, gradually slow down, lowest speed in the "1" position.

OPERATION

1. Check that the right type of sanding belt is fitted. .
2. Hold the sander with one hand on the handle and the other on the auxiliary handle. Switch on by pressing the ON/OFF switch trigger. Apply the sander to the work piece. Sand lengthways along the work piece.
3. Give the sander time to work. It is rarely necessary to press the sanding belt hard against the surface to be worked. Start with coarse sandpaper and switch to finer paper if/when required. If a very smooth surface is required, clean the item thoroughly with a soft cloth after the final sanding. Switch to very fine sandpaper and give the item one extra sanding.
4. Avoid blocking the vent holes with your hand, as this may cause the sander to overheat.
5. Switch off by releasing the ON/OFF switch trigger.

EXPLODED DIAGRAM



EXPLODED DIAGRAM LIST

NO.	Item name	Qty	NO.	Item name	Qty
1	Cross head self-tapping screw	8	20	Guiding lights	1
2	Lable	1	21	Cable clamp assembly	1
3	Belt cover	1	22	Cable conductor	1
4	Poly V-belt	1	23	Cable sheath	1
5	Hexagon die nut	1	24	Brush cap	2
6	Big belt pulley	1	25	Carbon brush	2
7	Dust flap	1	26	Brush holder	2
8	Dust blades	1	27	Left casing	1
9	Side cover	1	28	Deep groove ball bearing 626 2RS	1
10	Deep groove ball bearing 608 2RS	3	29	Gasket 10. 3x19x0.5	4
11	Pinion	1	30	Big gear	1
12	Cross head self-tapping screw	9	31	Cylindrical pin 3x14	1
13	Right shell	1	32	Circlip for shaft	1
14	Deep groove ball bearing 6000 2RS	2	33	Adjusting knob	1
15	Copper bush	1	34	Regulating spring	1
16	Rear roller assembly	1	35	Gasket1 6X22X0.5	2
17	Block rubber	1	36	Brand	1
18	Baseplate	1	37	Ceramic fovea	1
19	Indicator-lamp cover	1	38	Cross head self-tapping screw	2

39	Speed controller	1	47	Lower cover	1
40	Cross head self-tapping screw	2	48	Tension spring	1
41	Switch	1	49	Tensioned flushing	1
42	Stator	1	50	Locating pin	1
43	Small belt pulley	1	51	Fore - gyro wheel	1
44	Rotor	1	52	Needle bearing	2
45	Sand belt	1	53	Knuckle spindle	1
46	Cross head self-tapping screw	4	54	Dust bag	1

MAINTENANCE

1. Store the tool, instruction manual and accessories in a secure place. In this way you will always have all the information and parts ready to hand.
2. Keep the tool's air vents unclogged and clean at all times.
3. Remove dust and dirt regularly. Cleaning is best done with compressed air or a rag.
4. Never use caustic agents to clean plastic parts.

CAUTION

Do not use cleaning agents to clean the plastic parts of the tool. A mild detergent on a damp cloth is recommended. Water must never come into contact with the tool.

If the supply cord needs replacing, the task must be carried out by the manufacturer, the manufacturer's agent, or an authorised service centre in order to avoid a safety hazard.

WARRANTY CARD

Dear customers, the warranty service for purchasing TEH products is as follows:

Under normal use, the wear of the rotor steering gear is less than 0.2 mm within three months from the date of purchase. It is guaranteed that the damage is caused by the quality of the tool.

The following conditions occur during the warranty period, not covered by the warranty:

- a. Any valid legal document (single ticket) certifying the date of purchase
- b. Any damage caused by natural wear and overload
- c. Any damage caused by the use of low-priced inferior accessories
- d. Any damage caused by improper carrying, transportation or storage
- e. Any product that has been opened, repaired, replaced, or modified by itself
- f. Any damage caused by misuse, beyond the scope of use of the tool, and failure to use and maintain in accordance with the instructions.

ladies/gentlemen : _____ employer : _____

contact number : _____ fax number : _____

contact address : _____

warranty record : _____

post code : _____

IMPORTANT NOTE

1. The invoice and warranty card must be presented at the time of warranty.
2. The fuselage number on the invoice is the same as the fuselage number on the warranty card.
3. Once this warranty card is issued, if it is lost, it will not be reissued. Please keep it properly.

Note: The company reserves the right to amend the above provisions and has the final interpretation right in the case that the warranty service does not violate national laws.